

1. Description

TP4054 is a perfect single-chip constant current / constant voltage linear power management chip for lithium ion batteries. It's portable and small in size. Use. What's more, TP4054 is specially designed for USB power supply specifications. Due to the internal MOSFET structure, external resistance and blocking diode are not required in application. In high energy operation and high peripheral temperature, the thermal feedback can control the charging current to reduce the chip temperature.

The charging voltage is limited to 4.2V and the charging current is regulated by resistance. After reaching the target charging voltage, when the charging current is reduced to 1 / 10 of the set value, the TP4054 will automatically end the charging process. TP4054 can also be set in the stop working state to reduce the power supply current to $\mu\text{A} 25$. TP4054 ensures that the chip will automatically enter the protection state when the battery is connected reversely, so as to ensure that the IC will not be broken down and lead to battery self discharge accidents. Other features include: charging current monitoring, input low voltage blocking, automatic recharging and signs of full and start charging.

2. Characteristic

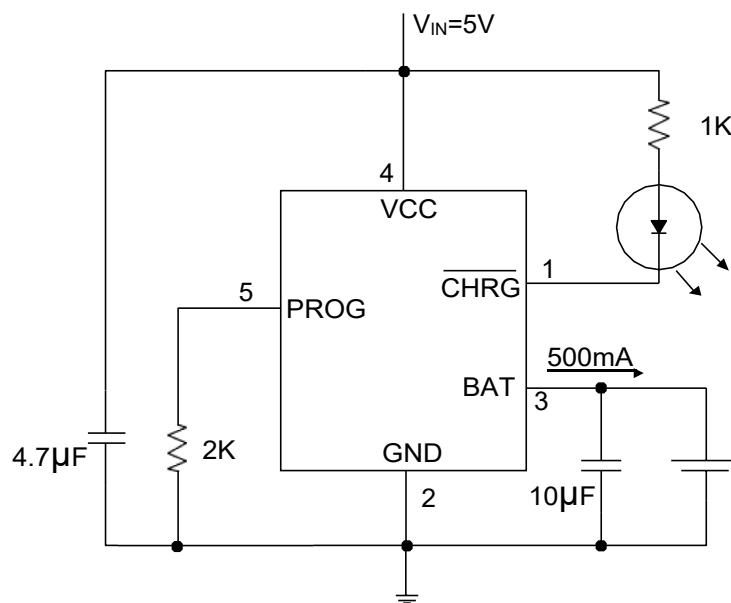
- Instantaneous withstand voltage 11V
- The charging current can reach 500mA by programming
- No MOSFET, sensing resistor and blocking diode are required
- Full linear charging management of lithium ion battery with small size
- The constant current / constant voltage operation and thermal regulation make the battery management more effective, and there is no danger of excessive heat
- Single chip lithium ion battery management from USB interface
- 4.2V preset charging voltage with an accuracy of $\pm 1\%$
- Monitoring of charging current output
- Charging status indicator
- 1 / 10 charging current termination
Stop work at $25\mu\text{A}$ current
- 2.9V trickle charging threshold voltage
- Soft start limits surge current
- Battery reverse connection protection
- Manage single-chip lithium-ion batteries through USB interface



3.Application

- Mobile phone, PDA, MP3
- Bluetooth application

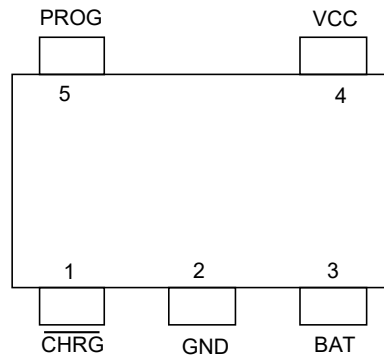
4. Typical Application



Fully functional single lithium battery charger



5. Pinning Information



SOT23-5

Pin Description

Pin Number	Pin Name	Describe
1	$\overline{\text{CHRG}}$	Open drain state of charge output
2	GND	Ground terminal
3	BAT	Charging current output
4	VCC	Positive input voltage
5	PROG	Charging current programming, charging current monitoring and closing terminal



Pin function

CHRG (pin 1): Open drain charging status output. When charging, the CHRG port is placed at a low potential by a built-in N-channel MOSFET. When charging

When the electricity is completed, CHRG exhibits a high resistance state. When TP4054 detects a low power lock condition, CHRG exhibits a high resistance state. When a 1 μ F capacitor is connected between the BAT pin and ground, it can indicate whether the battery is properly connected. When there is no battery, the LED light will flash quickly

GND (pin 2): Ground terminal.

BAT (pin 3): Charging current output terminal. Provide charging current to the battery and control the floating voltage to ultimately reach 4.2V. When the battery is reversed, the internal protection circuit protects the ESD diode of VBAT from burning out, and a current of approximately 0.7mA is formed between GND and BAT.

VCC (pin 4): Provide positive voltage input. Power the charger. VCC can range from 4.25V to 6.5V and must have a bypass capacitor of at least 1 μ F. If the voltage difference between the BAT pin terminal and VCC drops below 30mV, TP4054 enters a shutdown state and causes the BAT current to drop below 2 μ A.

PROG (pin 5): Charging current programming, charging current monitoring, and shutdown terminal. The charging current is controlled by a resistor connected to ground with an accuracy of 1% to control the ROG pin. When in a constant charging current state, this port provides a voltage of 1V. In all states, the charging current of this port voltage can be calculated using the following formula: $I_{BAT} = (V_{PROG} / R_{PROG}) \times 1000$. The ROG port can also be used to turn off the charger. Separating the programming resistor from the ground terminal can increase the voltage at the ROG port by pulling up a 2 μ A current source. When the maximum shutdown voltage value of 1.21V is reached, the actuator enters a stopped working state, charging ends, and the input current drops to 25 μ A. This port has a cut-off voltage of approximately 2.4V. Providing a voltage exceeding the pinch off voltage to this port will result in a high current of 1.5mA. Combining the ROG with the ground terminal will return the charger to its normal state.



6. Maximum Rating (Note 1)

Parameter	Symbol	Rating	Units
Input Voltage	V_{CC}	$V_{SS}-0.3\sim V_{SS}+7$	V
Prog Terminal Voltage	V_{PROG}	$V_{SS}-0.3\sim V_{SS}+0.3$	V
Bat Terminal Voltage	V_{BAT}	$V_{SS}-0.3\sim 7$	V
CHRG Terminal Voltage	V_{CHRG}	$V_{SS}-0.3\sim V_{SS}+10$	V
Power Waste	P_{DMAX}	250	mW
Bat Terminal Current	I_{BAT}	600	mA
Prog Terminal Current	I_{PROG}	800	μ A
ESD Capability In Human Mode	V_{ESD}	4	kV
Impedance Current Between Pin Pins	Latch-Up	400	mA
Working Peripheral Temperature	T_{OPA}	-40 to 85	$^{\circ}$ C
Storage Temperature	T_{STR}	-65 to 125	$^{\circ}$ C

Note 1: Devices beyond the maximum range may be damaged. The devices within the recommended working range can work, but their characteristics are not guaranteed. The DC and AC characteristics indicated by electrical characteristics are measured under specific conditions, and their characteristics can be guaranteed. This feature assumes that the device operates within the recommended operating range. Not showing the characteristics does not guarantee its performance.

The typical value is the optimal performance point.



7. Electrical characteristics

The test condition was 25°C

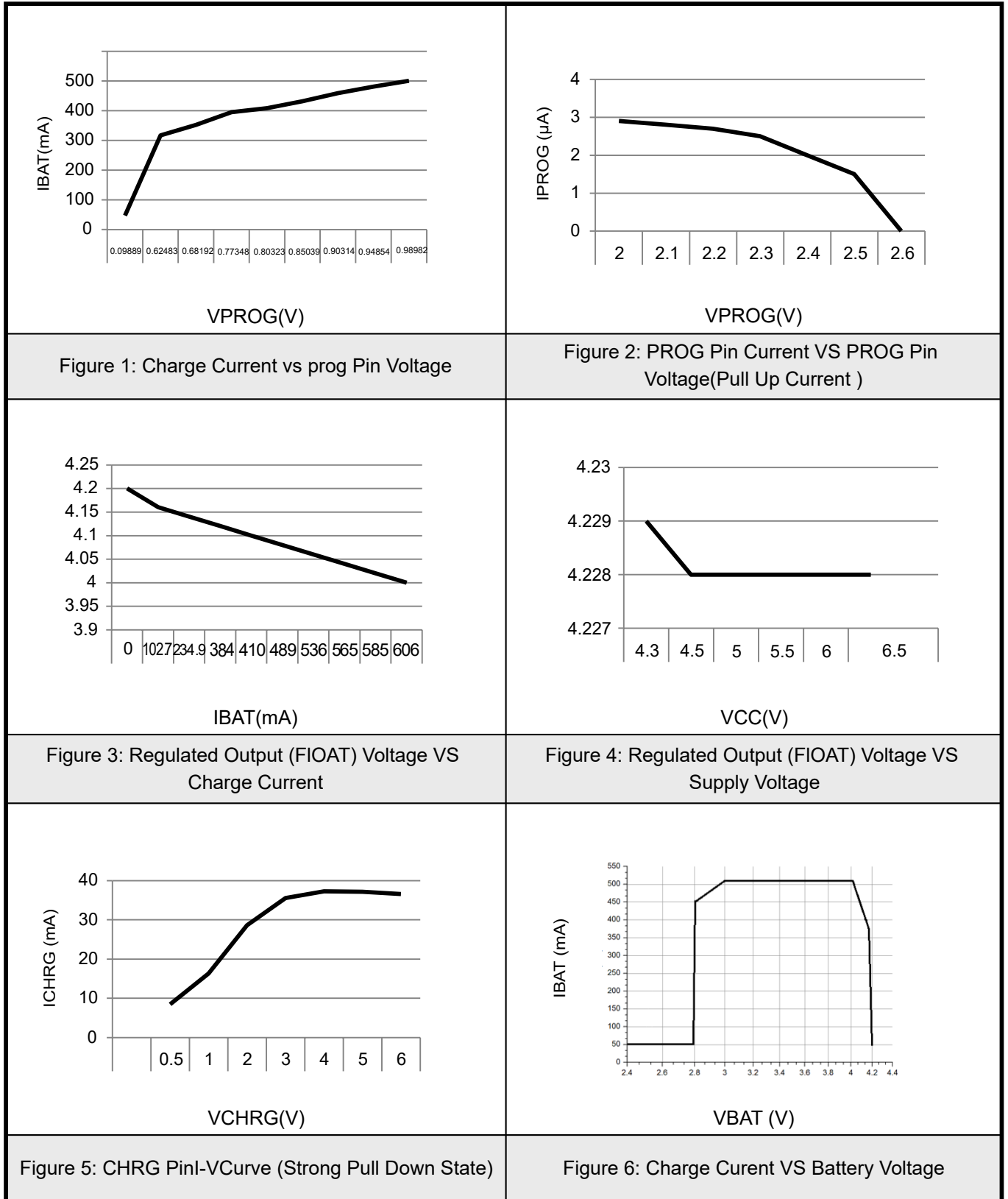
Parameter	Symbol	Conditions	Min	Typ	Max	Units
Input Voltage	V_{CC}		4.2		6.5	V
Input current	I_{CC}	Charging mode ($R_{PROG}=10K\Omega$)		300	550	μA
		standby mode		200	500	μA
		Turn off mode (R_{PROG} is not connected $V_{CC}<V_{bat}$ or $V_{CC}<V_{UV}$)		25	50	μA
Output control voltage	V_{FLOAT}	$0^{\circ}C<T_A<85^{\circ}C$, $I_{bat}=40mA$	4.158	4.2	4.242	V
Bat terminal current	I_{BAT}	$R_{PROG}=10K$, current mode	93	100	107	mA
		$R_{PROG}=2K$, current mode	465	500	535	mA
		$V_{BAT}=4.2V$, standby mode	0	-2.5	-6	μA
		Turn off mode		6	10	μA
		$V_{BAT}=-4V$, battery reverse mode		0.7		mA
		$V_{CC}=0V$, sleep mode		6	10	μA
trickle charge current	I_{TRIKL}	$V_{BAT}<V_{TRIKL}$, $R_{PROG}=2K$	40	50	60	mA
Trickle charging limit voltage	V_{TRIKL}	$R_{PROG}=10K$, V_{BAT} increased	2.8	2.9	3	V
Trickle charge hysteresis voltage	V_{TRHYS}	$R_{PROG}=10K$	60	80	110	mV
Low power blocking threshold voltage of power supply	V_{UV}	Increased from low	3.7	3.8	3.93	V
Low threshold hysteresis voltage of power supply	V_{UVHYS}		150	200	300	mV
Manual turn off threshold voltage	V_{MSD}	Prog feet up	1.15	1.21	1.3	V
		Prog feet up	0.9	1	1.1	V
$V_{CC}-V_{BAT}$ stop working threshold voltage	V_{ASD}	V_{CC} from low to high	70	100	140	mV
		V_{CC} from high to low	5	30	50	mV
C / 10 terminal threshold current	I_{TERM}	$R_{PROG}=10K$	8.5	10	11.5	mA
		$R_{PROG}=2K$	35	50	65	mA



Parameter	Symbol	Conditions	Min	Typ	Max	Units
PROG terminal voltage	V_{PROG}	$R_{\text{PROG}}=10\text{K}$, current mode	0.93	1	1.07	V
Minimum output voltage at CHRG terminal	V_{CHRG}	$I_{\text{CHRG}}=5\text{mA}$		0.35	0.35	V
Battery recharge hysteresis voltage	ΔV_{RECG}	$V_{\text{FLOAT}}-V_{\text{RECHRG}}$		100	200	mV
Filtering time of charging comparator	t_{RECHG}	V_{BAT} from high to low	0.8	1.8	4	mS
Stop comparator filtering time	t_{TERM}	I_{BAT} fell below $I_{\text{CHG}}/10$	0.63	1.4	3	mS
Pull up current of PROG pin	I_{PROG}			2		μA

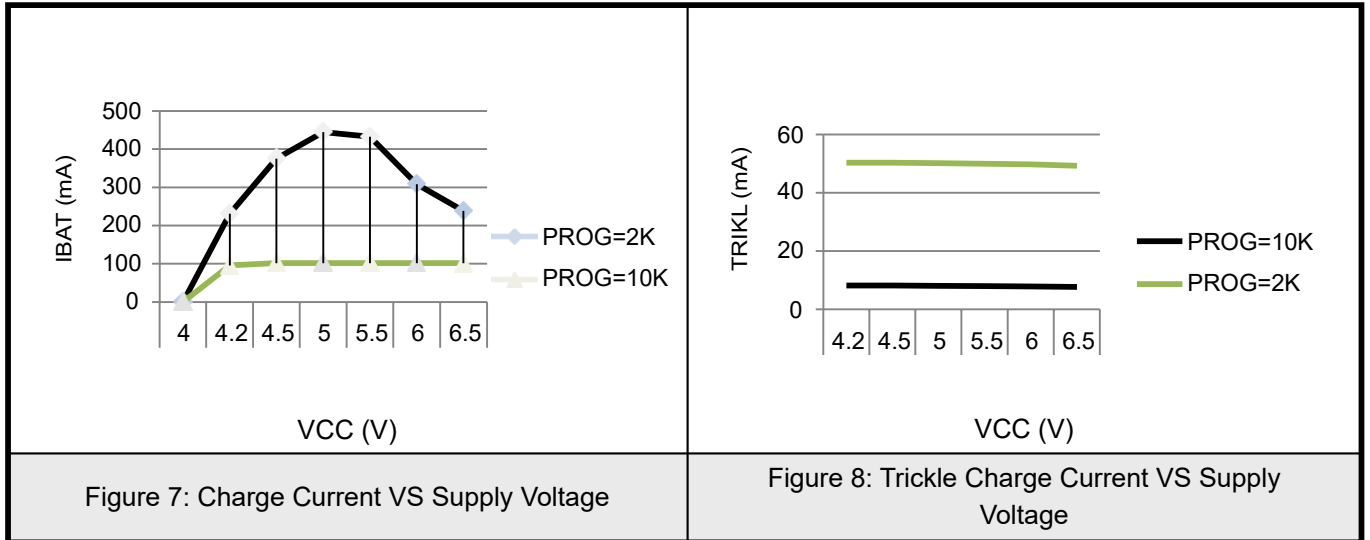


8.1 Typical Characteristic





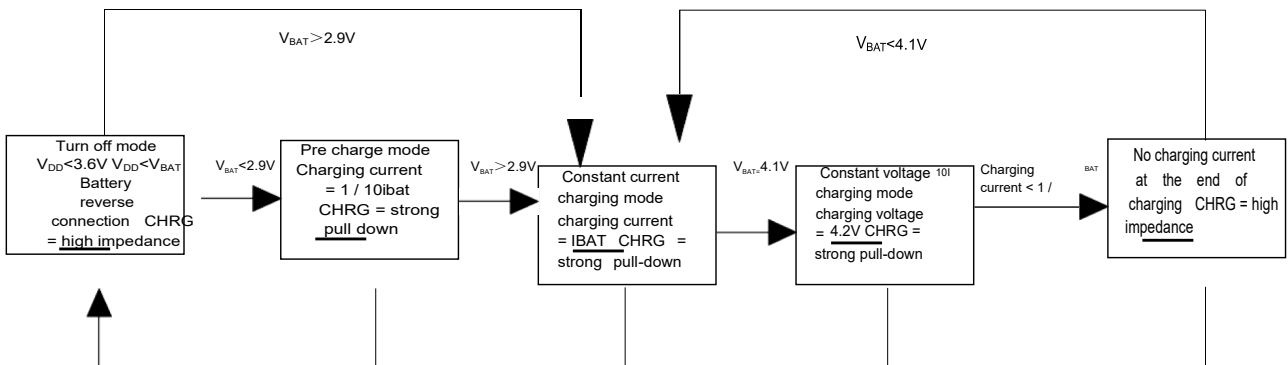
8.2 Typical Characteristic





9. Working Principle

TP4054 is a single cell lithium-ion battery charger that uses a constant current/constant voltage algorithm. It can provide a maximum charging current of around 500mA (with the help of a well-designed PCB layout) and an internal P-channel power MOSFET and thermal regulation circuit. No need for isolation diodes or external current sensing resistors.



Normal charging cycle

When the voltage of the VCC pin rises above the UVLO threshold level and a set resistor with an accuracy of 1% is connected between the PROG pin and ground, or when an electric When the pool is connected to the output terminal of the charger, a charging cycle begins. If the BAT pin level is below 2.9V, the charger enters trickle charging mode. In this mode, TP4054 provides about 1/10 of the set charging current to increase the current to a safe level, thereby achieving full current charging.

When the voltage of the BAT pin rises above 2.9V, the charger enters constant current mode, providing a constant charging current to the battery. When BAT pin voltage When the final float charging voltage (4.2V) is reached, it enters constant voltage mode and the charging current begins to decrease. When the charging current drops to 1/10 of the set value, the charging cycle ends.

Setting of charging current

The charging current is set using a resistor connected between the ROG pin and ground. The charging current is 1000 times the output current of the ROG pin. The resistor and charging current are calculated using the following formula:

$$R_{PROG} = \frac{1000}{I_{CHG}}, \quad I_{CHG} = \frac{1000}{R_{PROG}}$$



The charging current output from the BAT pin can be determined at any time by monitoring the voltage of the PROG pin, and the formula is as follows:

$$I_{BAT} = \frac{V_{PROG}}{R_{PROG}} \cdot 1000$$

The relationship between rprog and charging current is determined as follows:

RPROG(K)	IBAT(mA)
1.4	600
2	500
2.2	400
3	300
5	200
10	100

Battery reverse connection protection function

TP4054 has a lithium battery reverse connection protection function. When the positive and negative poles of the lithium battery are reversed to the LTC4054ES5-4.2TR current output pin, TP4054 will stop displaying Fault status indicated, no charging current. In reverse connection, the power supply voltage should be around 5V of the standard voltage and should not exceed 8V. When the power supply voltage is too high and the battery voltage is reversed, the chip voltage difference will exceed 10V, so the power supply voltage should not be too high in reverse connection.

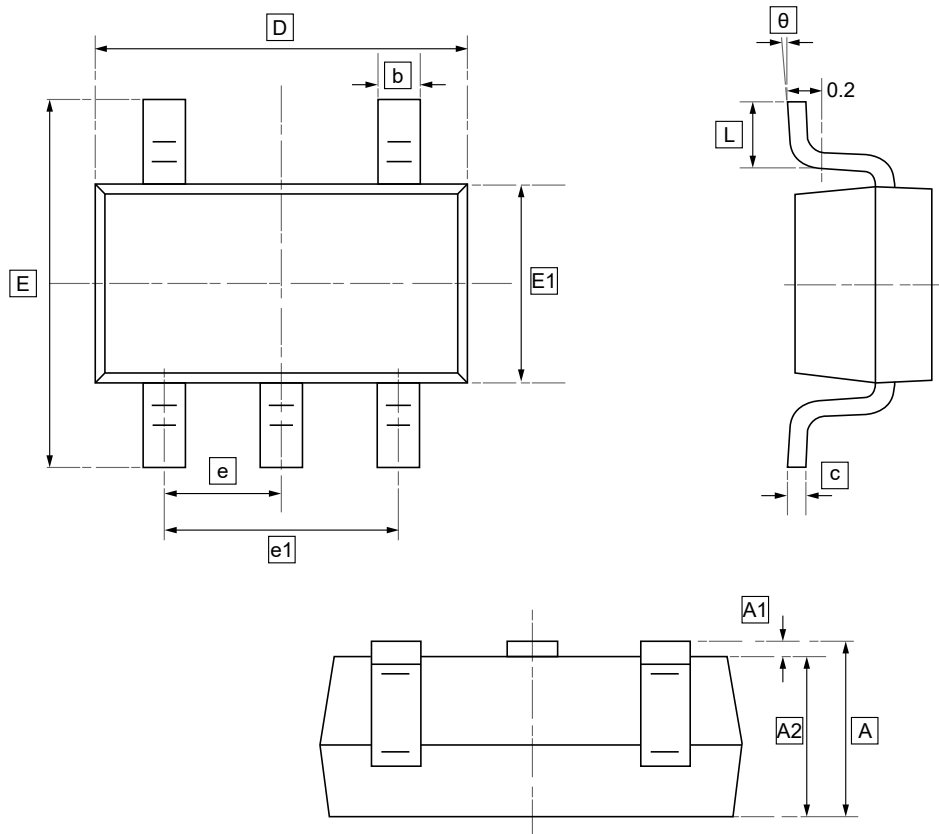
State of charge indicator (CHRG)

TP4054 has an open drain state indicating the output terminal "CHRG". When the charger is in charging state, CHRG is pulled to low power

In other states, CHRG is in a high resistance state. When the battery is not connected to the charger, CHRG outputs a pulse signal indicating that the battery is not installed. When the external capacitance of the BAT pin at the battery connection end is 10uF, the CHRG flashing cycle is about 0.5-2 seconds. When the status indication function is not in use, connect the output terminal of the unused status indication to ground.



11.SOT-23-5 Package Outline Dimensions

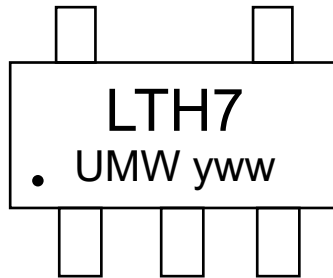


DIMENSIONS (mm are the original dimensions)

Symbol	A	A1	A2	b	c	D	E1	E	e	e1	L	θ
Min	1.050	0.000	1.050	0.300	0.100	2.820	1.500	2.650	0.950	1.800	0.300	0°
Max	1.250	0.100	1.150	0.500	0.200	3.020	1.700	2.950	BSC	2.000	0.600	8°



12. Ordering Information



yww: Batch Code

Order Code	Package	Base QTY	Delivery Mode
UMW TP4054	SOT23-5	3000	Tape and reel



13.Disclaimer

UMW reserves the right to make changes to all products, specifications. Customers should obtain the latest version of product documentation and verify the completeness and currency of the information before placing an order.

When applying our products, please do not exceed the maximum rated values, as this may affect the reliability of the entire system. Under certain conditions, any semiconductor product may experience faults or failures. Buyers are responsible for adhering to safety standards and implementing safety measures during system design, prototyping, and manufacturing when using our products to prevent potential failure risks that could lead to personal injury or property damage.

Unless explicitly stated in writing, UMW products are not intended for use in medical, life-saving, or life-sustaining applications, nor for any other applications where product failure could result in personal injury or death. If customers use or sell the product for such applications without explicit authorization, they assume all associated risks.

When reselling, applying, or exporting, please comply with export control laws and regulations of China, the United States, the United Kingdom, the European Union, and other relevant countries, regions, and international organizations.

This document and any actions by UMW do not grant any intellectual property rights, whether express or implied, by estoppel or otherwise. The product names and marks mentioned herein may be trademarks of their respective owners.